

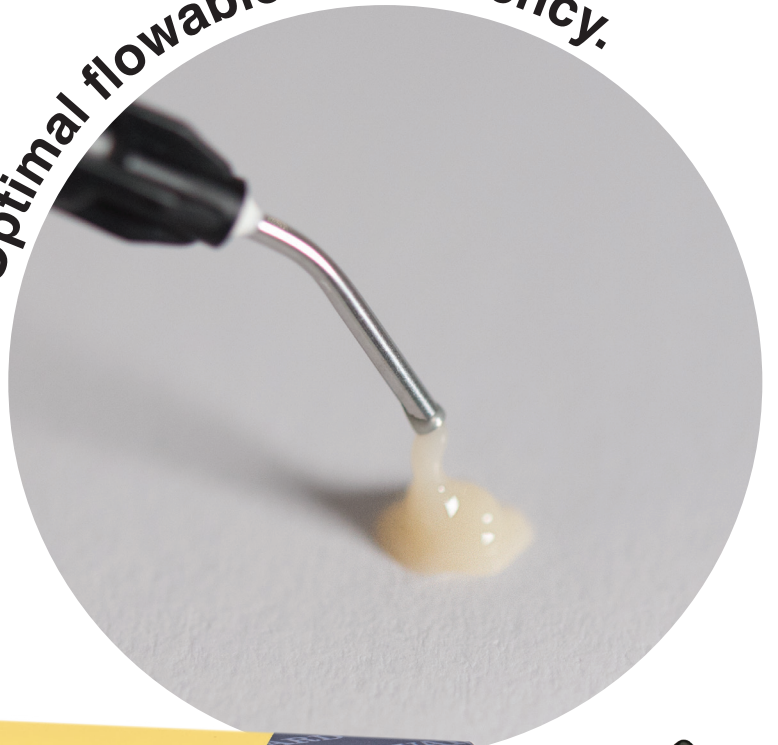
Harvard PremiumFlow⁺

Nano-Optimized Hybrid Flowable Composite
for **posterior** and anterior restorations

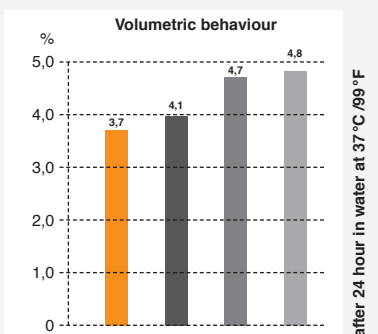
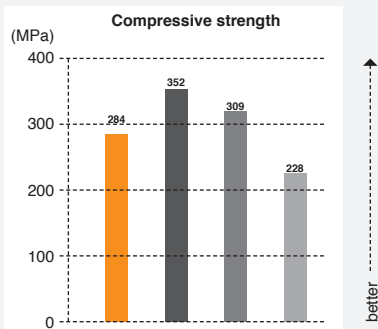
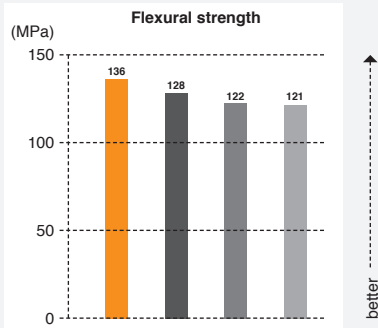
Harvard PremiumFlow⁺ provides optimum flowable consistency and excellent high gloss polishability. The low polymerization shrinkage ensures excellent filling quality. With cameleon effect for beautiful aesthetic restorations.

- Optimal flowable consistency
- Thixotropic
- Excellent high gloss polishability
- Beautiful esthetic restorations
- Low polymerization shrinkage
- Low abrasion
- Improved mechanical properties
- Cameleon effect

Optimal flowable consistency.



Physical Properties



■ Harvard PremiumFlow [◊]
■ Grandio Flow (Voco)
■ Filtek Supreme XT Flow (3M)
■ TetricEvo Flow (Ivoclar Vivadent)

Controlled flow!



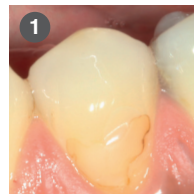
Harvard PremiumFlow [◊] has a „solid“ consistency during placement, but due to its thixotropic properties it flows when you move it! This essential property ensures a simple application.

Application



Perfect properties to build ambitious anatomical shapes (e.g. incisal and cervical restorations).

Application



1. Defective Filling
2. After remove etching and bonding
3. Application of Harvard PremiumFlow [◊]
4. Polished restoration

Technische Daten Harvard PremiumFlow [◊]

Flexural strength	136 MPa
Diametric tensile strength	53 MPa
Compressive strength	284 MPa
Modulus of elasticity	5,2 GPa
Barcol hardness	76
Shrinkage in Water, 24h	3,7 %

Article informationen

Harvard PremiumFlow [◊] Shade	syringe 2 x 1 ml	OptiTips® 20 x 0.25 g
A1	7082600	7082700
A2	7082601	7082701
A3	7082602	7082702
A3.5	7082603	7082703
B2	7082607	7082704
* incl. 8 needle tips H18		
Harvard NeedleTips H18 refill bag with 50 needle tips	7095158	
Harvard Applier OptiTips®	7095200	

Harvard PremiumFlow Shade	syringe 2 ml
A1	7082211
A2	7082212
A3	7082213
A3.5	7082214
B2	7082215
* incl. 6 needle tips H17	
Harvard NeedleTips H17 refill bag with 50 needle tips	7095157
Harvard ErgoGrip only for 2 ml syringe necessary	7082220

Liability is excluded for all printing errors and omissions. Before using our Harvard products, the respective directions for use should be noticed in every case. All measurements are internal measurements of Harvard Dental International.

Harvard Distribution Partner.



Marke und Qualität seit 1892

Harvard Dental International GmbH
 Margaretenstr. 2 - 4, 15366 Hoppegarten, Germany
 Phone: + 49 (0) 30/99 28 978-0
 Fax: + 49 (0) 30/99 28 978-19
 info@harvard-dental-international.de