





The new MTA XR specialties

Perfection in 4 variations.

MTA (Mineral-Trioxid-Aggregat) is an endodontic repair cement which cannot be missed in a dentist practice for a long time. Do not accept anything ordinary, if you can obtain the absolute perfection at the highest level now.

The future is: **Harvard MTA XR OptiCaps®**. Now Harvard presents four intelligent developments in the field of MTA cements:

-  **Harvard MTA XR Flow Fast**
-  **Harvard MTA XR Flow EWT**
-  **Harvard MTA XR Fast**
-  **Harvard MTA XR**

4 products – 4 unbeatable arguments:

- high **biocompatibility** (formation of calcium hydroxide and apatite)
- **excellent stability** in tissue fluid after setting
- **excellent marginal seal***
- increased **radiopacity** for easy interpretation of radiographs

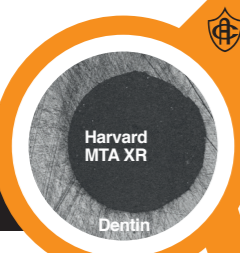
The new **Harvard MTA XR product specialties** are delivered in capsules. The comfortable mixing with a commercial capsule mixer saves time and offers these benefits:

- very good reproducible material properties
- always a homogeneously mixed material
- high safety during handling
- optimal consistency for every indication



Harvard MTA XR OptiCaps® Specialties

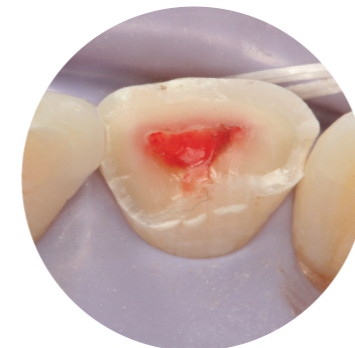
* Marginal seal
Each of the new 4 MTA XR specialties show an excellent adhesion to dentin which lead to an excellent marginal seal.



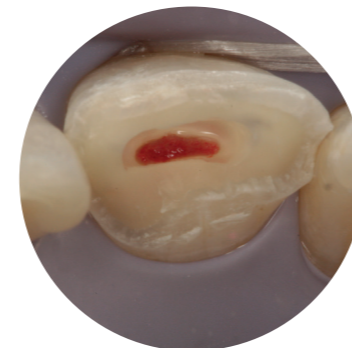
www.harvard-dental.de

The Harvard clinical case ...

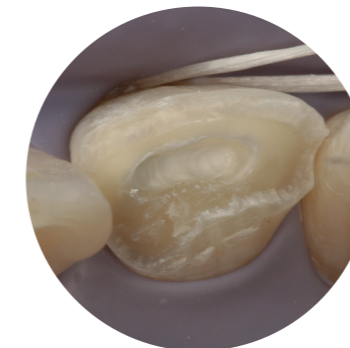
... with Harvard MTA XR Flow Fast



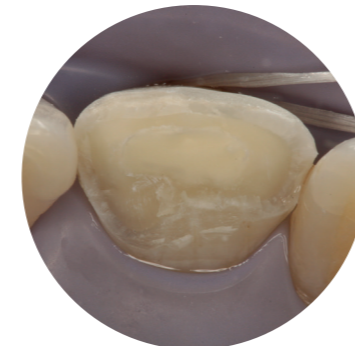
Initial situation:
Anterior tooth trauma 21



Partial pulpectomy



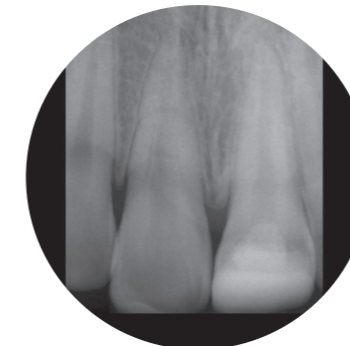
Application of
Harvard MTA XR Flow Fast



Covering with glass ionomer cement



4 months after dental trauma:
21 vital



1 year after dental trauma:
21 vital

Source: Thoenemann/Federlin, University of Regensburg (Germany)

Article information

	Order no.
Harvard MTA XR Flow Fast OptiCaps® 2 OptiCaps® ea. 0.25 g, ea. packed in an aluminum pouch	7081503
Harvard MTA XR Flow EWT OptiCaps® & EndoDirect Spritze 2 MTA XR Flow EWT OptiCaps® ea. 0.25 g, ea. packed in an aluminium pouch, 2 MTA EndoDirect syringes with bendable endo tip H25	7081509
Harvard MTA XR Fast OptiCaps® 2 OptiCaps® ea. 0.25 g, ea. packed in an aluminum pouch	7081506
Harvard MTA XR OptiCaps® 2 OptiCaps® ea. 0.25 g, ea. packed in an aluminum pouch	7081505
Harvard Applier OptiCaps®	7092000

Liability is excluded for all printing errors and omissions. Before using our Harvard products, the respective directions for use should be observed in every case. All measurements are internal measurements of Harvard Dental International.

Harvard Distribution Partner.



HARVARD®

Marke und Qualität seit 1892

Harvard Dental International GmbH
Margaretenstr. 2 - 4, 15366 Hoppegarten, Germany
Phone: + 49 (0) 30/99 28 978-0
Fax: + 49 (0) 30/99 28 978-19
info@harvard-dental-international.de

10990_EN_0018

www.harvard-dental.de

Harvard MTA XR OptiCaps® Specialties

The Endodontics is full of chances ...



... perfection in 4 variations.

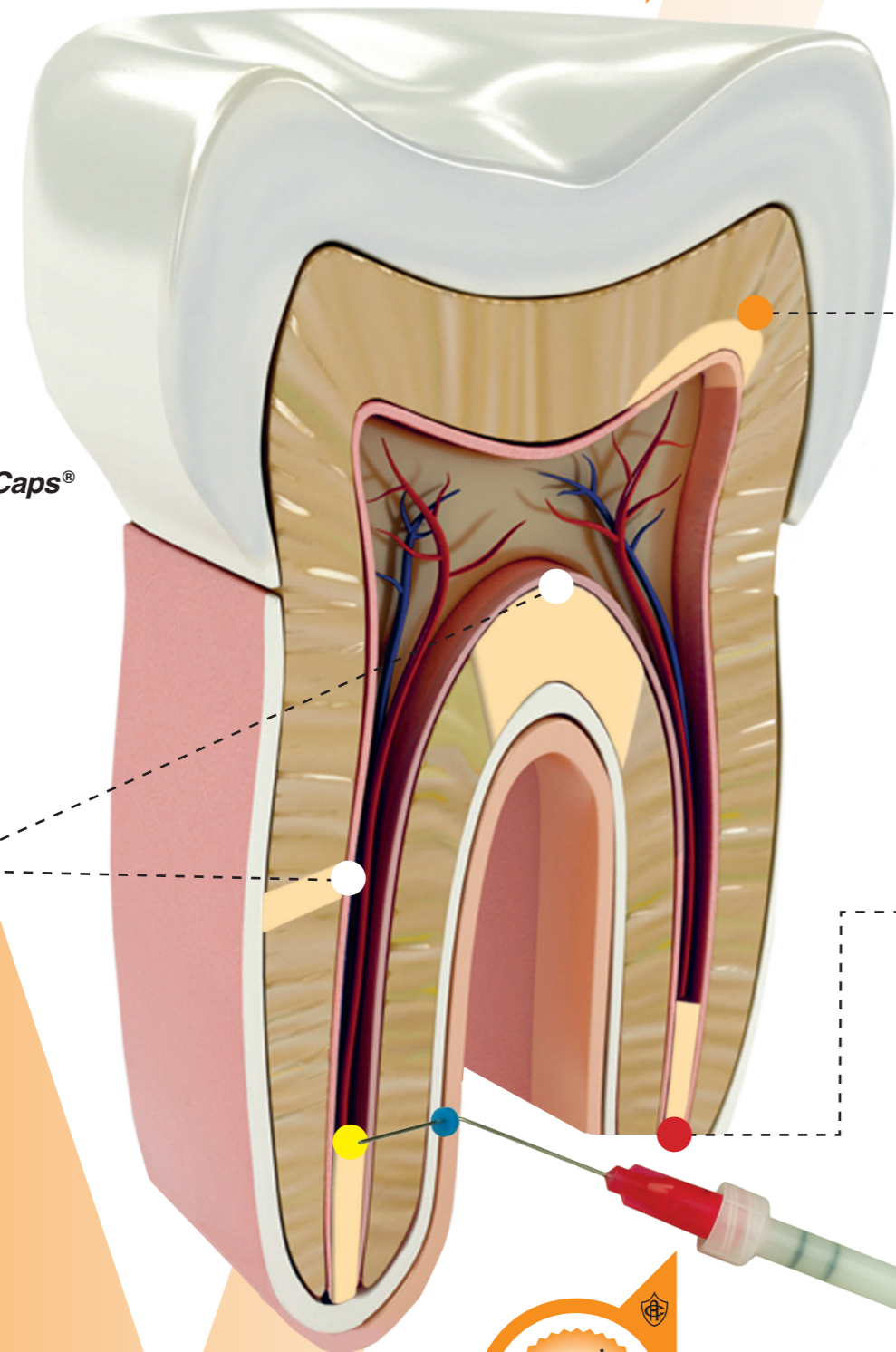


EN

For each indication
a special solution.

One
session
treatment

Harvard MTA XR OptiCaps®
Specialties



The syringe allows a deep application in the root canal.

Perfect with
EndoDirect
syringe

Discover the MTA XR-Concept ...

... the new variations of Harvard MTA cement offer the following combinations of material properties: Flowable or firm consistency with a shorter or longer working- or setting time. Thus each of the four products becomes an ideal solution for a professional endodontic application. **Discover these smart products by yourself.**

Harvard MTA XR Flow Fast

Ideal for pulp capping

- Very short setting time
- Extra white and flowable

Working time	02:00 min
Next clinical step possible after	03:00 min
Setting time	10:00 min



ea. 0.25 g

Harvard MTA XR Fast

Ideal for retrograde root end filling

- Very short setting time
- Increased radiopacity

Working time	02:00 min
Next clinical step possible after	03:00 min
Setting time	06:00 min



ea. 0.25 g

Harvard MTA XR Flow EWT

Ideal for orthograde root end filling

- Extra long working time
- Perfect application with Harvard EndoDirect syringe (optional)

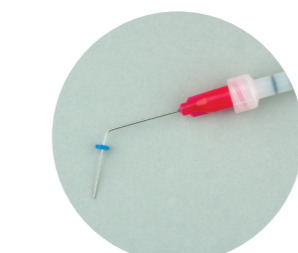
Working time	04:00 min
Next clinical step possible after	10:00 min
Setting time	40:00 min



ea. 0.25 g



For the perfect application of **Harvard MTA XR Flow EWT** into the root canal a special EndoDirect syringe is available.



Bended needle tip with individual working length



Filling of the Harvard EndoDirect syringe



Bring piston into the Harvard EndoDirect syringe



Application of MTA XR Flow EWT into the root canal

Harvard MTA XR

Ideal for sealing of root perforations

- Increased radiopacity
- Excellent sealing

Working time	02:00 min
Next clinical step possible after	05:00 min
Setting time	12:00 min



ea. 0.25 g

Smart. More intelligent. **Harvard MTA XR OptiCaps® Specialties**